



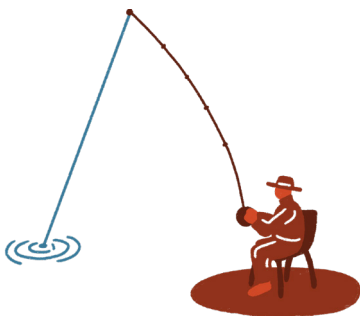
Summary

From Corston, this historic walk passes across agricultural land to the picturesque village of Newton St Loe. Continue across Duchy of Cornwall Estate land to the wonderful Grade 1 listed Capability Brown gardens within the Bath Spa University campus.

Amenities

Newton Farm Shop & Cafe, Newton St Loe, Bath BA2 9BT

Corston Village Store & Post Office, Corston, Bath BA2 9AH



Subscribe at Bath5kmap.org
Follow us @Bath5KMap

© Crown Copyright 2023
OS licence number AC0000862282
© 2023, Bath 5k Map Ltd

Route (part 1 of 2)



The start of this walk is at Manor Farm.

START: [///juices.wisely.shampoos](http://juices.wisely.shampoos)

1. From the starting point, cross the road and head down past Manor Farm following along the farm track up to the woodland and fields beyond the gate. Keep the woodlands to your left, and continue straight across the field to the gate at the far end which brings you to the edges of the Newton Farm estate.
2. As you pass through the gate, bear left with a glimpse of the lake to your right continuing up the footpath towards Corston Drive. Cross directly over the drive (this is the main entrance to Bath Spa University), through Bath Anglers Association car park and through the wooded area of Bishop Covert. You will soon join the lane at the edge of Newton St Loe village by Old Estate Yard.
3. Continue along the lane, and take your first left into a short residential lane for a 50 metres or so, taking the footpath that bears right through the gate across the field to the church.
4. The 14th century Holy Trinity Church, lies to the western edge of the village of Newton St Loe. Pass through the churchyard into the village. Directly ahead of you is the Old Rectory Georgian building which now houses the Duchy of Cornwall offices. The Duchy of Cornwall still owns much of the village and surrounding land including the university!
5. Continue through the village if you wish to visit the Newton Farm Cafe & Farm Shop, otherwise take the first right just at the junction of the Old Rectory, continuing down towards the iron gates that lead to the open lane passing between farmland, meandering towards the Steward's Lodge on the edges of the university.
6. At the end of the lane just before the lodge, pass through the gate on your left into the fields continuing diagonally across the fields around the edges of the university. A gate at the end of the fields will bring you through the edge of campus. Continue directly ahead towards the The Walled Garden & Vinery which is well worth a detour. Toilet facilities are also available here.
7. Past the walled garden, bear diagonally right to another gate that leads down into Park Wood and the heart of Newton Park. These woods are fabulous so do take your time to meander around the lake, and detour up to Newton St Loe Castle and admire the work of the eighteenth century landscape designer, Capability Brown.



Route (part 2 of 2)

The route continues below.



START: ///juices.wisely.shampoos

- To continue on the walk, as you come out of the short path through the woods, cross over the weir with the lake on your right, meandering around the lake to cross over the next weir. Just before the gate heading towards the campus buildings, bear left down through the woods to the fishing lake. Continue with the lake on your left until you join the footpath from earlier in your walk at the large iron kissing gate. Turn left after the gate, following your original path through the fields back towards Manor Farm.

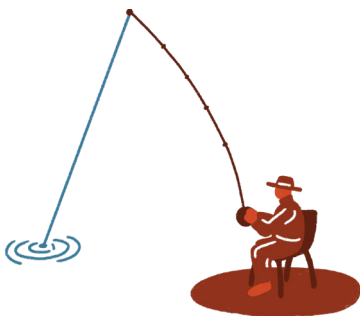
Summary

From Corston, this historic walk passes across agricultural land to the picturesque village of Newton St Loe. Continue across Duchy of Cornwall Estate land to the wonderful Grade 1 listed Capability Brown gardens within the Bath Spa University campus.

Amenities

Newton Farm Shop & Cafe, Newton St Loe, Bath BA2 9BT

Corston Village Store & Post Office, Corston, Bath BA2 9AH



Subscribe at Bath5kmap.org
Follow us @Bath5KMap